



e-news

from the Photographic Alliance of Great Britain

Issue 176 extra – 1 Dec 2016



GB Trophy

THE PRINT COMPETITION FOR CLUBS

The EPSON GB Trophy was judged on Saturday 19 November in Pontefract, organised and run by Howard Tate MA ARPS AFIAP. The judging set off briskly once everyone was in their place, with the Nature section judged first with an entry of 283 prints from 18 clubs, followed by the Open section with an entry of 532 prints submitted by 25 clubs.

In both competitions, generously sponsored by Epson, each photograph is marked out of 15 and the result is based on the aggregate of the best 12 scores, of which, in the Open, 4 must be Monochrome.

GB TROPHY OPEN 2016

	CLUB	FED	TOTAL POINTS FOR 12 PRINTS
1	SMETHWICK P.S.	MCPF	167
2	CHORLEY P.S.	L&CPU	164
3	DUMFRIES C.C.	SPF	156
4	INN FOCUS GROUP	WPF	155
5=	COLCHESTER P.S.	EAF	153
5=	STAFFORD P.S.	MCPF	153
7	CARLUKE C.C.	SPF	147
8=	CANNOCK P.S.	MCPF	145
8=	KESWICK P.S.	NCPF	145
10	WALSALL WOOD C.C.	MCPF	139

Once again, the result is based on the aggregate of the best 12 scores, out of 15 per print, by each Club.

GB TROPHY NATURE 2016

	CLUB	FED	TOTAL POINTS FOR 12 PRINTS
1	DUMFRIES C.C.	SPF	160
2	CHORLEY P.S.	L&CPU	158
3	KESWICK P.S.	NCPF	156
4	EVOLVE GROUP		149
5=	COLCHESTER P.S.	EAF	140
5=	PETERBOROUGH P.S.		140
7	STAFFORD P.S.	MCPF	137
8	SMETHWICK P.S.	MCPF	136
9	STOKESLEY P.S.	NCPF	135
10	LEICESTER FOREST P.S.		128

Open Judges	Nature Judges
Paul Keene MPAGB EFIAP/d1 MFIAP FRPS Sue Moore MPAGB FRPS Stephanie Cook DPAGB EFIAP LRPS	Paul Keene MPAGB EFIAP/d1 MFIAP FRPS Bob Moore MPAGB FIPF FBIPP HonFRPS HonPAGB Tim Munsey ARPS

Helpers on the day were Adrian Lines, Jane Lines, Gordon Jenkins, and Richard Spurdens, who was to judge but was made ineligible when his club entered with some of his images.

The award-winning pictures in this **e-news** are mostly photographs of prints and cannot represent the quality of the finished entry. The full results and the pictures can be viewed more comfortably at –

<http://www.thepagb.org.uk/competitions/gallery/album-for-2016/>

EXHIBITION

- 5.1 No catalogue will be produced and the results will be published by e-mail and online. We intend to exhibit the "Accepted" Prints in Poster Type Display cradles, at all PAGB Public events such as the Inter-Club Print Championship, The Inter-Club PDI Championship, the Inter-Federation Judging and Exhibition, the Awards for Photographic Merit and the PAGB AGM. We also hope to be able to make them available for Federation events.
- 5.2 We will try to represent every Club and every entrant in the "Accepted" Prints but this will obviously depend on the number of entries received.

BRING YOUR PRINTS TO LIFE



SureColor SC-P600

Introducing our new top-of-the-range A3+ photo printer that combines superb quality, high productivity and superior wireless connectivity. Featuring our new nine colour UltraChrome HD inkset with Vivid Magenta to reproduce a wide colour gamut and the highest black density* (2.86 DMax on Premium Glossy Photo Paper) to produce prints with deep, rich blacks and ultra-smooth tonal gradations.

www.epson.co.uk

EPSON ULTRACHROME
HD ink

*Compared against competitors' A3+ photo printers with a 6-colour or greater inkset available as of July 2014.



EPSON[®]
EXCEED YOUR VISION



Bob Moore, Paul Keene, Sue Moore, Tim Munsey & Stephanie Cooke

MOST LIKE GEORGE

an award of mystery

Chosen by Organiser, Howard Tate, to his own mysterious specification.

Open - Most Like George,
Bronze Medal

Foxy Lady
by
Judi Dicks (Stafford)

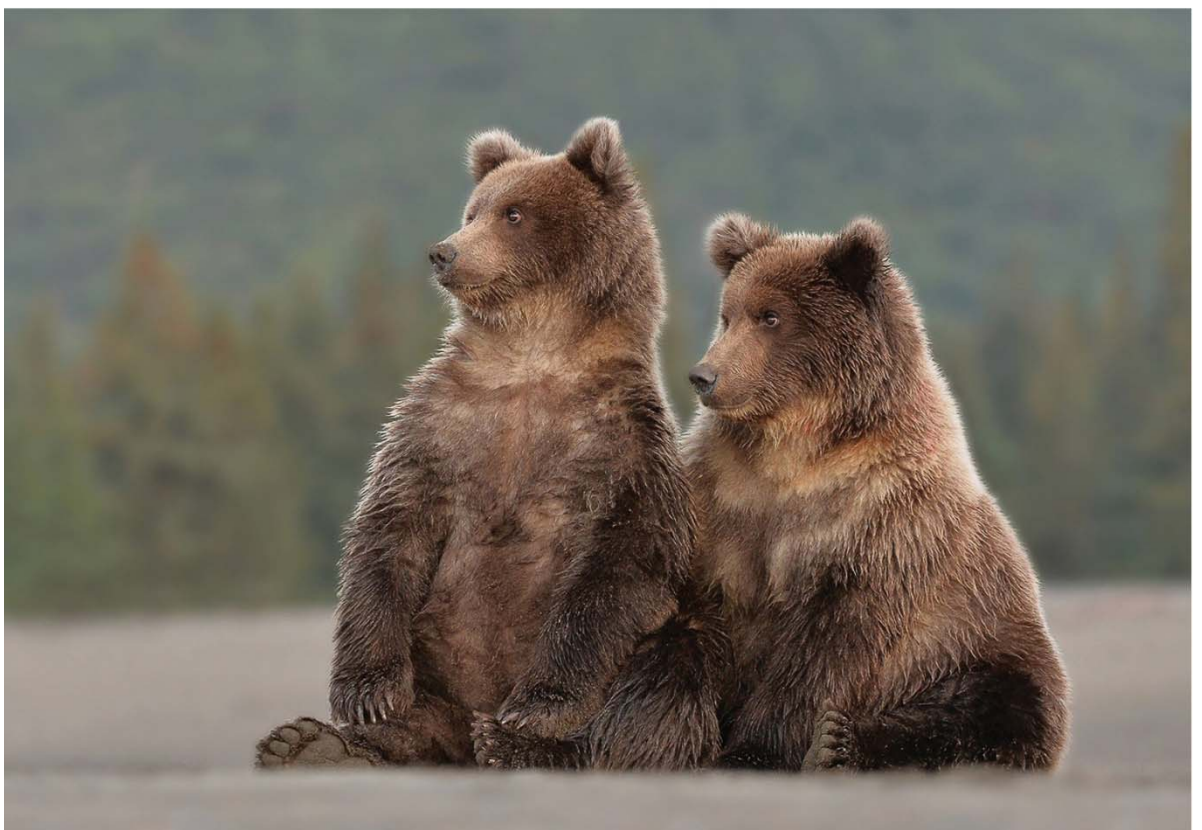
Nature - Most Like George,
Bronze Medal
GRUMPY SPARROWHAWK
by
GORDON RAE (Dumfries)

GB Trophy Nature SILVER MEDALS

Predator and
Prey by Mick
Durham (Dumfries)
chosen by
Paul Keene



Hare by David
Wood (Evolve Group)
chosen by
Bob Moore



Watching Mum
by Gordon Rae
(Dumfries) chosen
by Tim Munsey

GB Trophy Open SILVER MEDALS

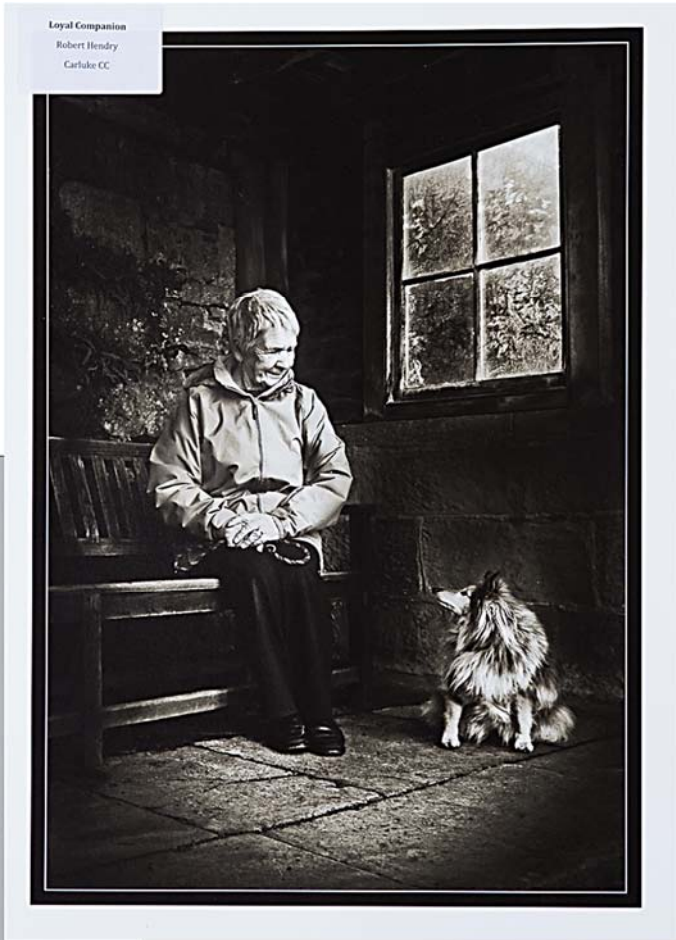
**Loyal Companion by Robert Hendry
(Carluke CC), chosen by Paul Keene**

**Luna And Her Cat by Jane Lines,
(Chorley PS), chosen by Stephanie Cooke**

**Dodge City by Hilary Roberts,
(Smethwick PS), chosen by Paul Keene**

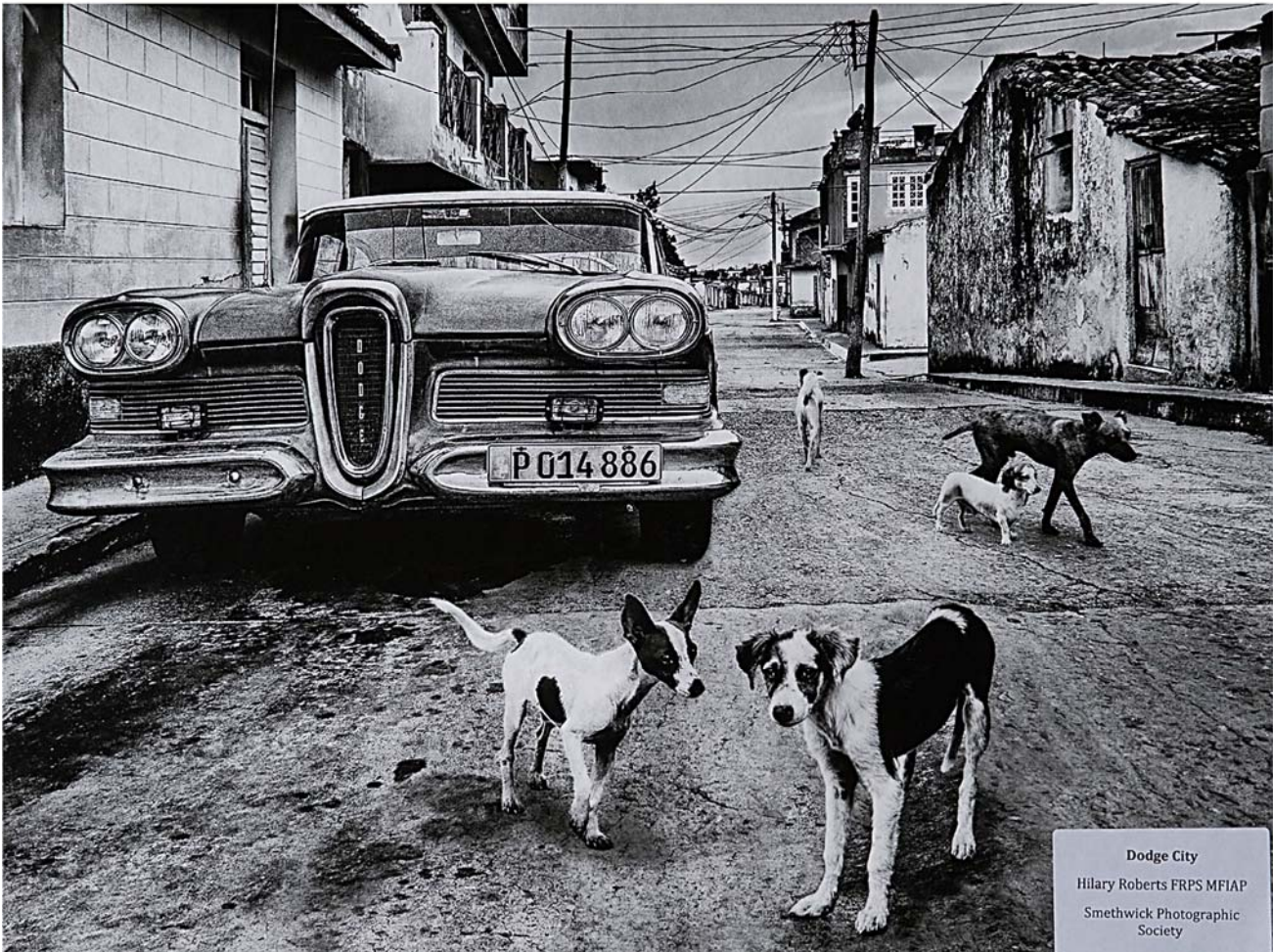


Luna And Her Cat
Jane Lines MPAGB LRPS BPES
Chorley Photographic Society



Loyal Companion
Robert Hendry
Carluke CC

Please be aware that these are prints which have been photographed and do not represent the proper quality.



Dodge City
Hilary Roberts FRPS MFIAP
Smethwick Photographic Society

GB TROPHY OPEN INDIVIDUAL BRONZE MEDALS

Dirty Business
Spirit of Ecstasy
The Bothy, Elphin
Goth Girls
Delicate Shades
Near miss
Mersey Wave

Adrian Lines
Roger Parry
Philip Byrne
John Jerstice
Diane Owen
David Byrne
Philip Byrne

Chorley PS
Smethwick PS
Stafford PS
Chorley PS
Chorley PS
Cannock PS
Stafford PS

Best Cowboys
Best Figure Study
Best Landscape
Best Portrait
Best Soft Focus
Best Sport
Best Wave

GB TROPHY NATURE INDIVIDUAL BRONZE MEDALS

Juvenile Starling Dispute
Courting Red Crowned Cranes
Jay Touch Down
Three Wasps Drinking
Egg Dropping Locusts
Pine Marten
Tawny Catching Mole

Roy Rimmer
Ronnie Gilbert
John Barlow
Roy Rimmer
David Hodgson
Philippa Wheatcroft
Mike Hudson

Chorley PS
Keswick PS
Chorley PS
Chorley PS
Peterborough PS
Smethwick PS
Evolve Group

Best Action
Best Behaviour
Best Bird in Flight
Best Insect
Best Macro
Best Mammal Wildlife
Best Original



Nature - Best Action Bronze Medal.



Nature - Best Behaviour Bronze Medal.



Nature - Best Bird in Flight Bronze Medal.



Nature - Best Insect Bronze Medal.



Nature - Best Macro Bronze Medal.



Nature - Best Mammal Bronze Medal.



Nature - Best Original Bronze Medal.



Open - Best Cowboy Bronze Medal.



Open - Best Figure Study Bronze Medal.



Open - Best Landscape Bronze Medal.



Open - Best Portrait Bronze Medal.



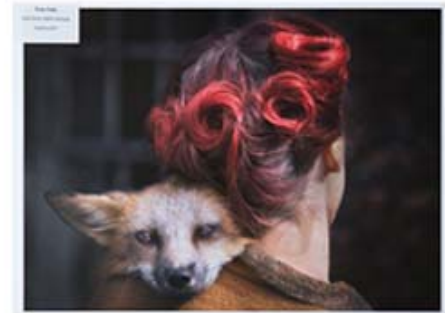
Open - Best Soft Focus Bronze Medal.



Open - Best Wave Bronze Medal.



Nature - Best Like George Bronze Medal.



Open - Best Like George Bronze Medal.

Please bear in mind that these are prints which have been re-photographed and these thumbnails cannot properly show the quality.

YOU HAVE ENJOYED THE GB TROPHY (PRINTS NOW TRY THE GB CUP (PDI) A DVD SHOW FOR EVERY CLUB WHO ENTERS

The GB Cup 2017 is OPEN for entry NOW until 15 January 2017



Entry Fees for Each GB Cup

(to defray costs which are also being subsidised from Sponsorship income)

- GB Cup (Open) £7.50 per club
- GB Cup (Small Clubs) £7.50 per club
- GB Cup (Natural History) £7.50 per club

THE GB CUP 2017 IS SPONSORED BY www.paperspectrum.co.uk

The Great British Cup (Large Clubs Open)

- 1.1 Each club must submit 15 PDI – ONLINE.
- 1.2 Natural History PDI are NOT permitted and, if included, the judges will be asked to assess them strictly as pictorial PDI, not as Nature. Please comply fully with this rule.
- 1.3 No photographer may have more than 4 PDIs and there must be at least 6 photographers in the entry.

The Great British Cup (Small Clubs Open)

- 2.1 Each club must submit 10 PDI – ONLINE.
- 2.2 Natural History PDI are NOT permitted and, if included, the judges will be asked to assess them strictly as pictorial PDI, not as Nature. Please comply fully with this rule.
- 2.3 No photographer may have more than 4 PDIs and there must be at least 4 photographers in the entry.

The Great British Cup (Nature)

- 3.1 Each club may submit a minimum of 3 and a maximum of 21 PDI – ONLINE.
- 3.2 The Winning Club will be decided on the aggregate of the 10 highest scoring PDIs. If a Club has entered fewer than 10 PDIs it cannot qualify for the Club trophy. Individual awards will be available at the discretion of the judges including “PAGB Nature Photographer of the Year” based on an individual’s best 3 PDIs. You are encouraged to enter even if you have only one Nature photographer in your Club. The judges will recognise all aspects of Nature.
- 3.3 No photographer may have more than 3 PDIs.
- 3.4 The Natural History definition is here www.fiap.net/docs/definition/DefNat-en.pdf.
- 3.5 The GB Cup is not a Wildlife Competition but photographs which comply with the Wildlife definition and which are marked (W) may be considered for a Wildlife Individual Award.

For the Full Rules, Explanatory Notes and Entry Form visit
<http://www.thepagb.org.uk/competitions/great-british-cup>