



PERMAJET THE INKJET PAPER SPECIALISTS - PROUD SPONSORS OF THE PAGB e-news

# e-news

from the Photographic Alliance of Great Britain

Issue 211 extra 06 July 2018

Welcome to

# WARWICK

The Inter-Club PDI Championship 2018



GM. Highland Winter by Joe Mee

The Championship is competed for by Clubs, but Individual Awards are also chosen. This super photo by Joe Mee, from Rolls Royce (Derby) P.S., was the Individual Gold Medal Winner in 2017. You can see the successful entries from 2017 and read more about the event in **e-news 189 extra**.

The Inter-Club  
PDI Championship  
is Sponsored by ...

# Fotospeed

**PROFESSIONAL INKJET MEDIA & INKS**

Hon Editor: Rod Wheelans MPAGB MFIAP FIPF HonPAGB HonSPF. [rod@creative-camera.co.uk](mailto:rod@creative-camera.co.uk)

Opinions expressed in e-news are not necessarily the opinions of The Photographic Alliance of Great Britain and neither the Editor nor the PAGB accepts any liability for any content. Any mention of products or services in e-news does not constitute an endorsement or approval of those items

# WARWICK 2018 COMPETING CLUBS

Club	Federation
<b>Amersham Photographic Society</b>	<b>Chilterns Association of Camera Clubs</b>
<b>Arden Photographic Group</b>	<b>Midland Counties Photographic Federation</b>
<b>ARDS Camera Club</b>	<b>Northern Ireland Photographic Association</b>
<b>Ashford Photographic Society</b>	<b>Kent County Photographic Association</b>
<b>Beyond Group</b>	<b>East Anglian Federation</b>
<b>Bookham Camera Club</b>	<b>Surrey Photographic Association</b>
<b>Bristol Photographic Society</b>	<b>Western Counties Photographic Federation</b>
<b>Cambridge Camera Club</b>	<b>East Anglian Federation</b>
<b>Cannock Photographic Society</b>	<b>Midland Counties Photographic Federation</b>
<b>Catchlight Camera Club</b>	<b>Northern Ireland Photographic Association</b>
<b>Central Photographic Association</b>	<b>Northern Ireland Photographic Association</b>
<b>Chichester Camera Club</b>	<b>Southern Counties Photographic Federation</b>
<b>Chorley Photographic Society</b>	<b>Lancashire &amp; Cheshire Photographic Union</b>
<b>Conwy Camera Club</b>	<b>North Wales Photographic Association</b>
<b>Cookridge Camera Club</b>	<b>Yorkshire Photographic Union</b>
<b>Dorchester Camera Club</b>	<b>Western Counties Photographic Federation</b>
<b>Dumfries Camera Club</b>	<b>Scottish Photographic Federation</b>
<b>Eastwood Photographic Society</b>	<b>Scottish Photographic Federation</b>
<b>Godalming Photographic Club</b>	<b>Surrey Photographic Association</b>
<b>Hexham &amp; District Photographic Society</b>	<b>Northern Counties Photographic Federation</b>
<b>Huddersfield Photo Imaging Club</b>	<b>Yorkshire Photographic Union</b>
<b>Inn Focus Group</b>	<b>Welsh Photographic Federation</b>
<b>Keswick Photographic Society</b>	<b>Northern Counties Photographic Federation</b>
<b>Maidstone Camera Club</b>	<b>Kent County Photographic Association</b>
<b>Mold Camera Club</b>	<b>North Wales Photographic Association</b>
<b>Newark &amp; District Photographic Society</b>	<b>North &amp; East Midlands Photographic Federation</b>
<b>North Cheshire Photographic Society</b>	<b>Lancashire &amp; Cheshire Photographic Union</b>
<b>Nottingham &amp; Notts Photographic Society</b>	<b>North &amp; East Midlands Photographic Federation</b>
<b>Poulton-le-Fylde Photographic Society</b>	<b>Lancashire &amp; Cheshire Photographic Union</b>
<b>Rolls-Royce (Derby) Photographic Society</b>	<b>North &amp; East Midlands Photographic Federation</b>
<b>Smethwick Photographic Society</b>	<b>Midland Counties Photographic Federation</b>
<b>Southampton Camera Club</b>	<b>Southern Counties Photographic Federation</b>
<b>Tenby &amp; District Camera Club</b>	<b>Welsh Photographic Federation</b>
<b>Torbay Photographic Society</b>	<b>Western Counties Photographic Federation</b>
<b>Western Valley Camera Club</b>	<b>Welsh Photographic Federation</b>
<b>Wigan 10 Foto Club</b>	<b>Lancashire &amp; Cheshire Photographic Union</b>
<b>Wrekin Arts Photography Club</b>	<b>Midland Counties Photographic Federation</b>
<b>Wycombe Photographic Society</b>	<b>Chilterns Association of Camera Clubs</b>



*PAGB President, Gordon Jenkins*

# Saturday 14<sup>th</sup> July 2018

## SAME VENUE, NEW THEATRE

Due to the over-run of the upgrading work on the usual Theatre used, we will be using the Butterworth Theatre in the same building for this year's Championship. It is a great deal larger but only the lower area tiered seating (500+ seats) will be used.

The access to the building will be through the entrance by the University Book Shop. You will be able to drop off people, before moving your car to Car Park 7.

The Butterworth Theatre entrance is on the right with a large foyer to the left.

In this area you will find the Programmes and Badge Holders being issued and Raffle Tickets being sold. We also expect to have 7 Trade Stands for our sponsors.

There will be no access to the Theatre until at least 9.30am as we must start again, learning the set-up. Admission is by ticket purchased in advance.

### **TIMETABLE.** *All times are estimated, except where underlined.*

<b>08.30</b>	<b>PAGB Team (only) admitted to the auditorium.</b>
<b>09.30</b>	<b>Audience admitted to auditorium.</b> PAGB stewards will hand out programmes and check tickets
<b><u>10.15</u></b>	<b>Projection and Judging of the First Round.</b>
<b>11.15</b>	<b>End of first session and a break whilst Clubs choose their</b> to visit the Trade Stands of our Sponsors.
<b>12.10</b>	<b>Projection of the Second Round.</b>
<b>13.15</b>	<b>End second session and Lunch break. Clubs to choose their</b> entries and hand in forms for the Plate and The Final.
<b><u>14.30</u></b>	<b>Projection and Judging of the Plate Competition</b>
<b>15.30</b>	<b>Projection and Judging of The Final.</b>
<b>16.00</b>	<b>Judges retire to make awards. The Raffle draw takes place.</b>
<b>16.30</b>	<b>Presentation of awards and closing remarks</b>
<b>17.30</b>	<b>Finish and clear up</b>

### THE JUDGES

**Phil Charnock** FRPS MFIAP  
**Des Clinton** FIPF FRPS MFIAP  
**Richard Spurdens** EFIAP/P DPAGB BPE4



**NEW**



*"A paper with good weight, a beautiful heavy matt texture designed to bring out the fine detail in your work. A gorgeous soft whiteness renders colours beautifully and is exceptional for monochrome prints."*

Doug Chinnery

Image by Doug Chinnery

[www.fotospeed.com/cottonetching](http://www.fotospeed.com/cottonetching)

- @fotospeed
- FotospeedUK
- fotospeeduk
- fotospeed
- fotospeed.com



# SMETHWICK PS - WINNING ENTRY IN 2017



SME3\_Peter Gennard\_The Begging Bowl



SME4\_Hilary Roberts\_Fire in the Sky



SME5\_Judith Parry\_Preparing to Bathe



SME8\_Paul Keene\_Coots Fighting



SME10\_Peter Siviter\_Hoodie



SME11\_Mike Sharples\_Living with Memories



SME13\_Hilary Roberts\_Meat



SME14\_Philippa Wheatcroft\_Stunning Abscertain Hate



SME16\_Philippa Wheatcroft\_Pine Marten



SME20\_Paul Keene\_Black-Winged Stilts and Terrapin



SME17\_Peter Siviter\_Alice



SME19\_Mike Sharples\_Billy the Rat Catcher



SME27\_Tim Pile\_Limestone Beauty



SME26\_Judith Parry\_Just Moving In



SME33\_Peter Siviter\_Sarah



SME34\_Peter Gennard\_Smokers



SME28\_David Lowe\_Long Jump into the Lead



SME35\_Peter Gennard\_Steam Punk Desire



SME36\_Mike Sharples\_The Chargehand



# THERE IS ALWAYS A GREAT RAFFLE

AND WE ARE INDEBTED TO THESE COMPANIES FOR THEIR GENEROUS DONATIONS OF PRIZES



Cotswold Mounts  
DS Colour Labs  
Epson  
Fotospeed  
Guild of Master Craftsmen  
Hahnemühle  
Kenro  
Longridge  
Nomad  
Olympus  
Paper Spectrum  
Paterson  
PermaJet  
Time Line  
Wilkson Cameras  
USB2U  
Vanguard



Hahnemühle



# THE SYNERGY OF TECHNOLOGY AND BEAUTY

**LONGRIDGE**®

MOUNT CUTTING SYSTEMS

Hands on demonstrations at  
PAGB Warwick, July 14th

Find Ian at the stand!

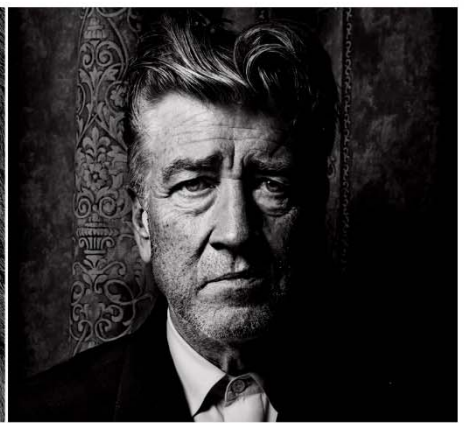
[www.longridge.co.uk](http://www.longridge.co.uk)



Hahnemühle

PAPER MAKES THE DIFFERENCE

PRODUCING DIGITAL FINE ART PAPERS SUITABLE FOR ALL PHOTOGRAPHIC NEEDS



MAKING PAPER SINCE 1584

THE HAHNEMÜHLE PHOTO AND FINEART PAPER RANGE  
SUITABLE FOR GENERAL DAY TO DAY USAGE TO ARCHIVAL EXHIBITION QUALITY.

TRIAL PACKS AVAILABLE IN A4 AND A3+ FORMATS

· [UKSALES@HAHNEMUEHLE.COM](mailto:UKSALES@HAHNEMUEHLE.COM) · 08453 300 129 · [WWW.HAHNEMUEHLE.COM](http://WWW.HAHNEMUEHLE.COM)



**PAGB**

**MASTERS OF  
PRINT  
EXHIBITION**

**MIDLAND SHOWING  
SMETHWICK PS  
15th to 29th JULY**

**OFFICIAL OPENING  
BY THE PAGB PRESIDENT  
GORDON JENKINS HonPAGB  
SUNDAY 15th JULY at 12pm**





darwin clayton  
evolutionary insurance

We provide Public Liability Insurance for Member Federations and affiliated Clubs as well as 'All Risks' Insurance for Clubs and Members

For full details visit our website: [www.darwinclayton.co.uk](http://www.darwinclayton.co.uk)

Contact Julie Cripwell at [julie.cripwell@dcuk.co.uk](mailto:julie.cripwell@dcuk.co.uk)

Call Us on **0115 951 7030**





# Pinnacle

Premium quality - not premium prices



**Premium LUSTRE 300**  
Our most popular photographic inkjet paper.

Premium heavyweight paper with an attractive Photo Lustre/Pearl finish. Outstanding print performance.



**500x400mm**  
High quality, acid free, precision guillotined

**Mountboard**

Great range of colours with a variety of cream, white or black core. Superb value for money.



Pre-cut, acid free, precision guillotine trimmed

**Window Mounts**

Standard apertures:  
A4, A3  
A3 3:2 Ratio  
A3 70mm Border  
280x280mm Square  
140x400mm Letterbox



**FineART BARYTA 300**

Bright white Baryta paper. Outstanding print quality delivering beautiful deep rich blacks and vibrant colours. Gives extra 'punch' to your images.



Photo Inkjet Paper  
Blank Greeting Cards  
Mounting Products  
ICC Colour Profiles

Fine Art Inkjet Paper  
Laser Paper  
Inkjet Cartridges  
Inkjet Cavas

Paper Spectrum Limited.  
Unit 12 Abbey Court, Wallingford Road, Leicester. LE4 5RD  
t: 0116 2681240 e: sales@paperspectrum.co.uk  
[www.paperspectrum.co.uk](http://www.paperspectrum.co.uk)



"The finish is a subtle texture with slightly more character than a silk but just the right amount to control glare when viewing from most angles. This combined with the extra weight and punchy brightness will make the media very suitable for exhibition, competition & qualifications panel printing."  
- Mike McNamee, Professional Imagemaker

Try it today at [www.permajet.com](http://www.permajet.com)



## NEW Photo Lustre 310

Image © William Barrington-Binns

See this NEW paper, and many more, at Warwick and take advantage of some great "show offers"





## Canon XEED WUX500 Brighter thinking

A compact, high-performance WUXGA installation projector with versatile connections and a huge 1.8x Zoom lens.

The LCOS panel and AISYS technology provide unrivalled colour reproduction and when combined with Canon lens technology, the WUX500 offers a superior image quality.

A comprehensive 3 year hardware & 3 year lamp warranty gives you complete peace of mind (T&C's apply).

For the latest exclusive PAGB projector offers call now and quote 'PAGB'  
**FREEPHONE 0808 274 7510**

**XEED** projectorpoint

**Canon**

# DISCOVER THE NEW BLACK

## SureColor SC-P800

Discover the deepest blacks\* and ultra-rich black density print capabilities. Allowing higher quality black and white A2 prints without colour being compromised. Epson's superior nine-colour printing sets a new standard for creating striking, dramatic colours. With fast output, wide media format and an option to include a unique roll paper unit, the SureColor SC-P800 will take high-quality professional photo printing to a new level.

Discover your new black at [www.epson.co.uk](http://www.epson.co.uk)

\* Compared against competitors' A2 photo printers with a 6-colour or greater ink-set available as of January 2015

**EPSON ULTRACHROME**  
**HD** INK



**EPSON®**  
EXCEED YOUR VISION



# SONY



## α7R<sup>III</sup>

### Resolution Master

The 42.4MP back-illuminated CMOS sensor with the latest generation image processor captures the finest details, in 10fps high-speed continuous shooting with accurate AF tracking. The real potential of full-frame is now unleashed.

INTRODUCING THE α7R<sup>III</sup> FROM SONY



Discover more at: [www.sony.co.uk](http://www.sony.co.uk)

\*Sony\*, 'α' and their logos are registered trademarks or trademarks of Sony Corporation. All other logos and trademarks are the property of their respective owners.